



saipem



CASTORO 12

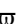


OFFSHORE

CASTORO 12

SHALLOW WATER PIPELAY BARGE,
CASPIAN SEA SERVICE

PRINCIPAL DIMENSIONS & CAPACITIES

Length of hull: 106 m
Length overall (LOA) including
truss: 115 m
Breadth overall: 29.35 m
Depth: 5 m
Operating draught (typical): 1.4 m
Class Notation: LRS X 100 AT Pontoon
and RMRS KE II C 
Helideck: 19.5 m dia. for Super Puma
AS332L2
Flag: Kazakhstan

PIPELAY EQUIPMENT

Maximum pipe size: 40"
30 t Remacut Tensioner
A&R winch 30 tons
Welding PASSO system
Line-up system,
two multi directional rollers
2 bevelling stations
3 welding stations
1 NDT (UT) station
1 repair station
2 field joint stations
Maximum deepwater pipelay: 12 m

MOORING SYSTEM

5 double drum anchor winches:
MEP AT25000
Max. pull: 35 tons
Polyester rope 60 mm dia., 400 m length
10 anchors: 2.5 tons Delta Flipper type

POWER GENERATION

Main generators three @ 800 kw,
380 V, 50 Hz

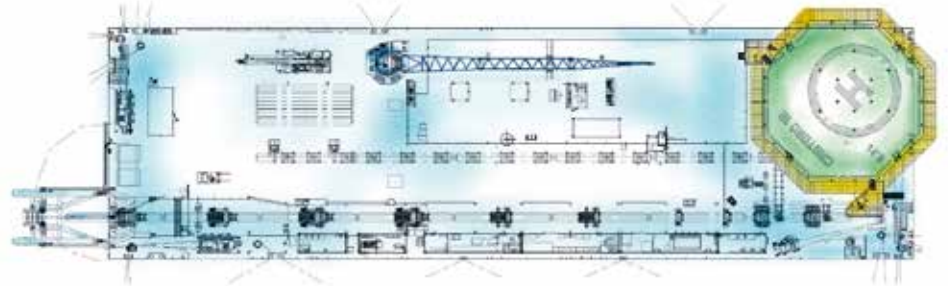
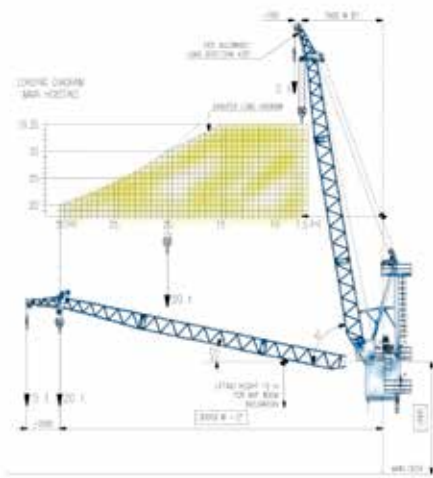
LIFTING EQUIPMENT

Pedestal crane: 35 tons
Boom length: 30 m
Foldable crane: 20 tons

ACCOMMODATION FACILITIES

Up to 150 people in single, double,
4 bed cabins. Offices, common spaces
and crew recreation facilities.
Water maker generator: Tasman Sea
72m³/day (Danfoss Sea Recovery Corp)







saipem

People, Skills, Equipment.

Saipem S.p.A.

Via Martiri di Cefalonia, 67 - 20097 San Donato Milanese, Milan - Italy

Tel. +39.02.520.1 - Fax +39.02.520.44415

saipem.com - A subsidiary of Eni S.p.A.